

DIGITAL PUMP CONTROLLER



INTELLIGENT



DIGITAL



PROTECTION

MAIN PROTECTION

- OVER-LOAD PROTECTION
- UNDER VOLTAGE PROTECTION
- DRY RUN PROTECTION
- OVER-VOLTAGE PROTECTION
- LOW-VOLTAGE PROTECTION
- PUMP STALLED PROTECTION
- PUMP RUST PROTECTION
- PHASE FAILURE PROTECTION



CONTROL MODE

- DRAINAGE CONTROL
- WATER SUPPLY CONTROL
- TIME SETTING CONTROL
- WATER LEVEL CONTROL
- PRESSURE CONTROL



+91-9343232111



WWW.UNIQUE-TECHINDIA.COM



BENGALURU-INDIA

Description of Q-Digital Controller

A digital pump controller is an electronic device designed to automate the operation of water pumps, enhancing their efficiency and reliability. These controllers are equipped with advanced microprocessor technology that enables them to manage the pump's functionality based on real-time data and preset parameters. By utilizing sensors, a digital pump controller can monitor water levels in tanks or wells, pressure in pipes, and even detect any anomalies such as dry running or overload conditions. Upon gathering this information, the controller decides when to activate or deactivate the pump, ensuring optimal water usage and energy efficiency. Additionally, digital pump controllers feature user-friendly interfaces with programmable settings, making them easy to configure according to specific needs. They contribute significantly to water conservation and reduce the risk of mechanical failure by preventing unnecessary wear and tear on the pump system.

Typical Application of Q-Digital Controller

- Water Tanks and Wells
- Flood Control
- Cooling Tower
- Pressure Booster Systems
- Twin Pump Operations
- Drainage System
- Agriculture Irrigation / pumping
- Fishing Boat
- Waste Water Treatment

Typical Application of Q-Digital Controller

- Pump Workign Mode: Master / Standby / Dual pump rotation / Dual pump start.
- Pressure Control Mode: Electrical contact pressure gauge / switch.
- Water Level Control: Liquid probe & Float switch.
- Time Setting ON/OFF & Auto / Manual Switch.
- Automatic restart after power recovery.
- Displaying Voltage, Current / Water Level.
- Dry run recovery time: 0 to 720 min adjustable.
- Restart after under/over voltage protection.
- Failure Check: Latest 10 Fialures.



Multiple security protection



Electric contact pressure gauge



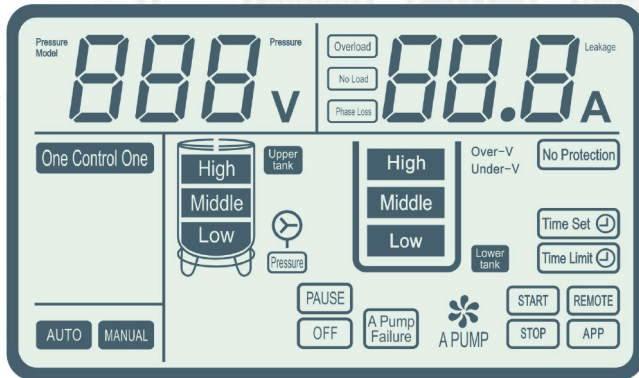
Timing start and stop



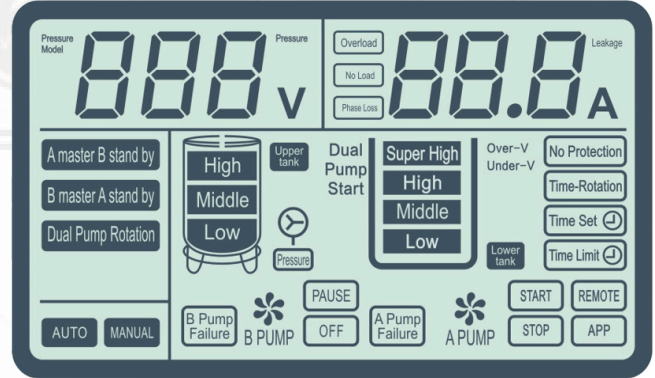
Pulse electrode probe



Floating ball control



Single Pump Display



Dual Pump Display

Q-DIGITAL PUMP CONTROLLER MODEL

1. QDPC-SP1-2-2 (Single Pump Controller up to 2.2 KW, Single Phase)
2. QDPC-SP1-3.0 (Single Pump Controller up to 3 KW, Single Phase)
3. QDPC-SP3-4.0 (Single Pump Controller up to 4 KW, Three Phase)
4. QDPC-SP3-7.5 (Single Pump Controller up to 7.5 KW, Three Phase)
5. QDPC-TP1-4.0 (Twin Pump Controller up to 4 KW, Single Phase)
6. QDPC-TP3-7.5 (Twin Pump Controller up to 7.5 KW, Three Phase)
7. QDPC-SP1-7.5 (M) (Twin Pump Controller up to 4 KW, Single Phase, Metal Enclosure)
8. QDPC-TP3-7.5 (M) (Twin Pump Controller up to 7.5 KW, Three Phase, Metal Enclosure)

Manufacturer and brand owners of



UNIQUE-Q TECH INDIA PVT. LTD.
Site No: 108 & 109, "Yajaman Thimmaiah Enclave"
Madanayakanahalli Grama Survey No: 27,
Dasanapura Hobli, Bengaluru - 562 162
Land Phone: +91-80-29919449

CALL NOW



+91-9343232111



www.unique-techindia.com



sales@unique-techindia.com