



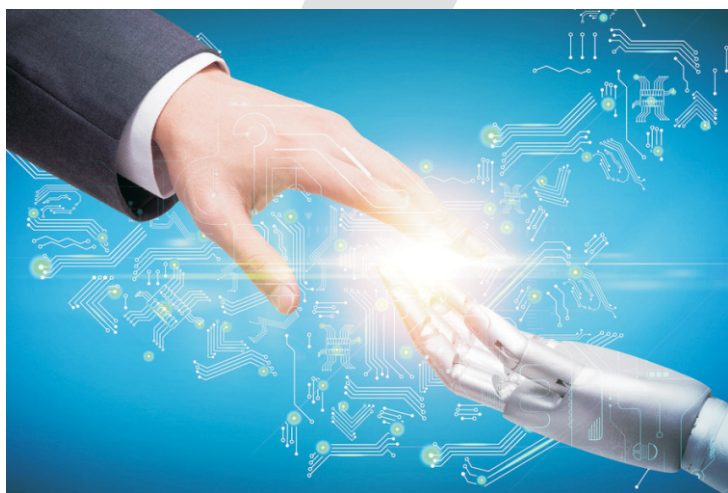
Quality never sleeps...



univon
AIR TO WATER HEAT PUMP

Quality Air to Water Heat Pumps

CONTENTS



Quality - Power - Technology

- 1 • Company Introduction
- 2-3 • Main Components
- 4 • Quality Control Details
- 6-9 • Univon Domestic Hot Water Heat Pump Series
 - Univon Water Cycle Heat Pump with Built - in Water Pump
 - Univon All in One Heat Pump
- 10-11 • Univon Commercial Hot Water Heat Pump Series
 - Univon Commercial Air Source Heat Pump (Cycle Heating)
- 12-15 • Univon High Temperature Heat Pump Series
 - Univon 80°C High Temperature Air Source Heat Pump For Hot Water
 - Univon High Temperature Air Source Heat Pump For Drying
- 16-17 • Univon Sample Installation Photos





Company Introduction



ABOUT US

UNIQUE-Q TECH INDIA PRIVATE LIMITED, is an ISO 9001:2015 ISO 14001: 2015, CE Certified company based in Bangalore, with Established leadership and pioneering efforts in the field of Water Solutions based such as Heat Pumps, Softeners (WTP), Sewage Treatment Plants (STP), Re-Circulation Controllers, Solar Water Heater and Lightings, UPS Systems and Servo Controlled Voltage Stabilizers, Control Panels. The Products are designed as per the Indian Standards and far and wide directly or as OEM products or systems, giving the company brand leadership and status.

UNIQUE-Q TECH INDIA PRIVATE LIMITED, was formerly known as Unique Business Corporation, and was Established in the Year 2000 with a Motive of "Serving Customers with Quality Products".

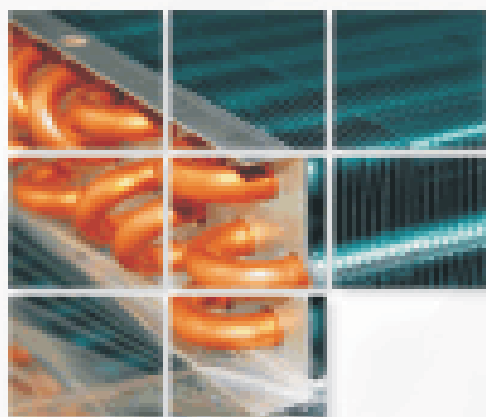
Unique Business Corporation was taken over by **UNIQUE-Q TECH INDIA PRIVATE LIMITED** in the year 2021 with the vision of spreading their Wings Pan India and Serve the Clients with Quality Products at Valuable price and at One Point solutions.

UNIQUE-Q TECH INDIA PRIVATE LIMITED is having a Cumulative experience of 25 plus years in the same field and has expertise in Mechanical/Electrical/ Plumbing (MEP) to serve their Customers for challenging /complicated products by customizing the same.

Goal: To achieve Total Customer Satisfaction by ensuring supply of Quality Products and Service

Vision: To meet Customer demand and to be market leader with Innovative and Creative Products and give solutions under one Roof.

Quality Policy : "Quality Never Sleeps..."

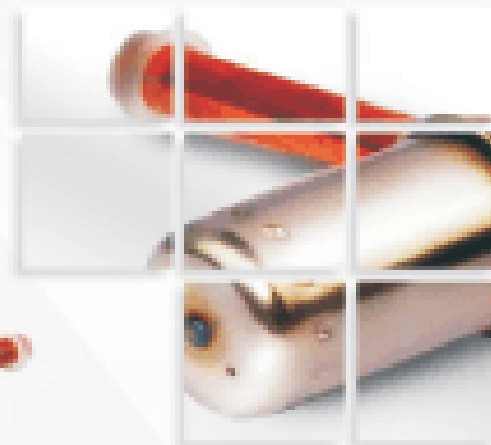


Hydrophilic aluminum foil heat exchanger



Hydrophilic aluminum foil heat exchanger , not easy hang dew, not easy to frost, anti-corrosion, anti-mildew,high efficiency,internal thread cooper pipe,increase heat transfer surface. Two rows of evaporator, compact structure,good ventilation,reduce frost, improving energy efficiency up to 15%.

Danfoss Electric Expansion Valve



Danfoss 500 steps Electronic Expansion valve, with more precise control of refrigerant flow system, which optimize heat pump working capacity and efficiency under different ambient conditions.



ORIGINAL DUPONT REFRIGERANT

Original Dupont refrigerant, better efficient and ECO friendly, ensure heat pump run reliably and operate smoothly.



Advanced Welding Technology

Nitrogen-Welding Technology purifies the Refrigerant Pipe System to avoid the Inner residual damages to the compressor; with extra superior welding flux, it makes welding junction steadier, reduce oxidation of copper pipe, prevent gas leakage.



Aerial Noise Isolated Material

By using High Quality Aerial Noise Isolated material, noise and vibrations can be avoided perfectly.



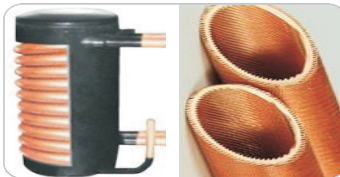
COPELAND (USA EMERSON) COMPRESSOR:

High Efficiency, Stable Performance, and Specially designed for Heat Pump Products. Long life (at least 15 years) and free from normal working Abrasion with various protection systems, which ensures the heat pump to run smoothly with Additional advantage of Over Current protection, Over Temperature protection, High Voltage and Low Voltage protection. It has Resistance to the liquid hammer strongly and run steadily on bad conditions



T6 FAN :

Well selected axial T6 fan motor combined with large fan blade, which provide heavy air blow at low rotation speed, thus by reducing vibration and noise.



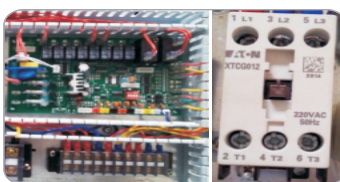
HIGH EFFICIENT TUBE IN SHELL CONDENSER (HEAT EXCHANGER)

Optimized design of Both Inner and Outer by screwed tube method, it helps to increase the heat exchange efficiency, and provide the better heating capacity. Special design of liquid refrigerant and circulating tube at the bottom of condenser ensures the heat pump system run smoothly in severe working condition.



OUTFITTING BOTH LIQUID-STORAGE AND GAS-LIQUID SEPARATOR

Our heat pump outfitting have both liquid-storage and gas-liquid separator which ensures System run smoothly at extreme conditions



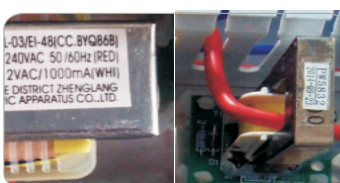
EATON AC CONTACTOR AND THERMAL RELAY

High quality Contactor and Thermal relay can freely turn on/off more than 100,000 times.



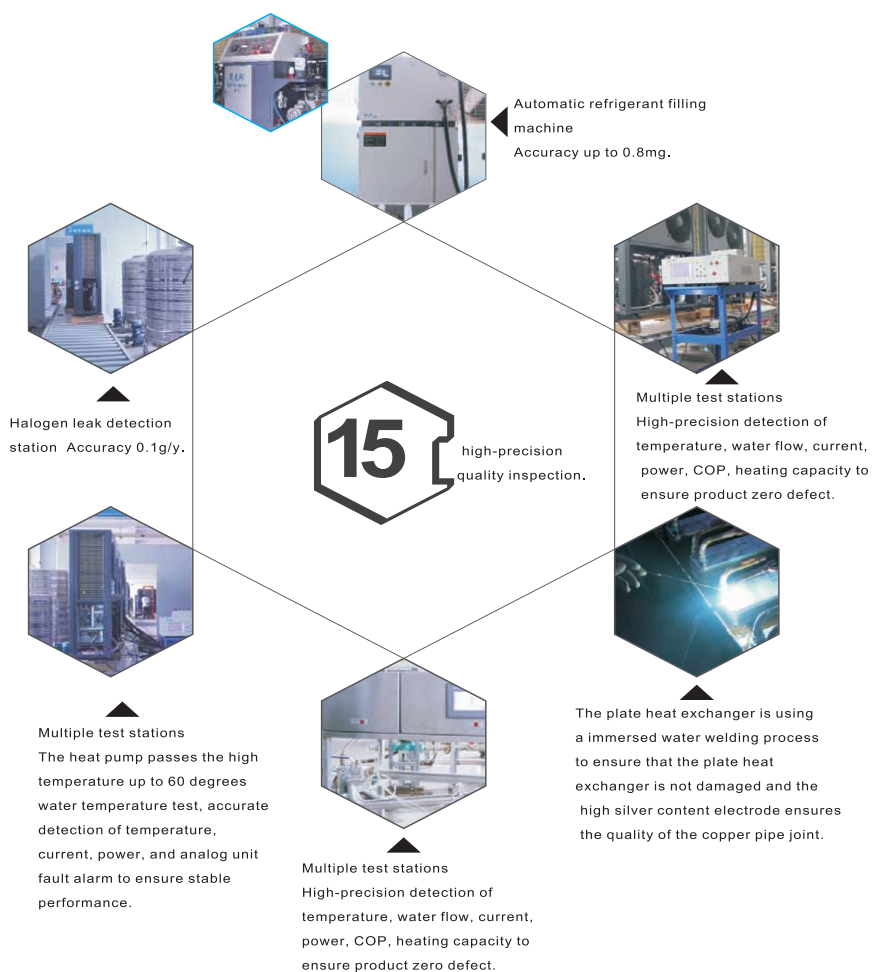
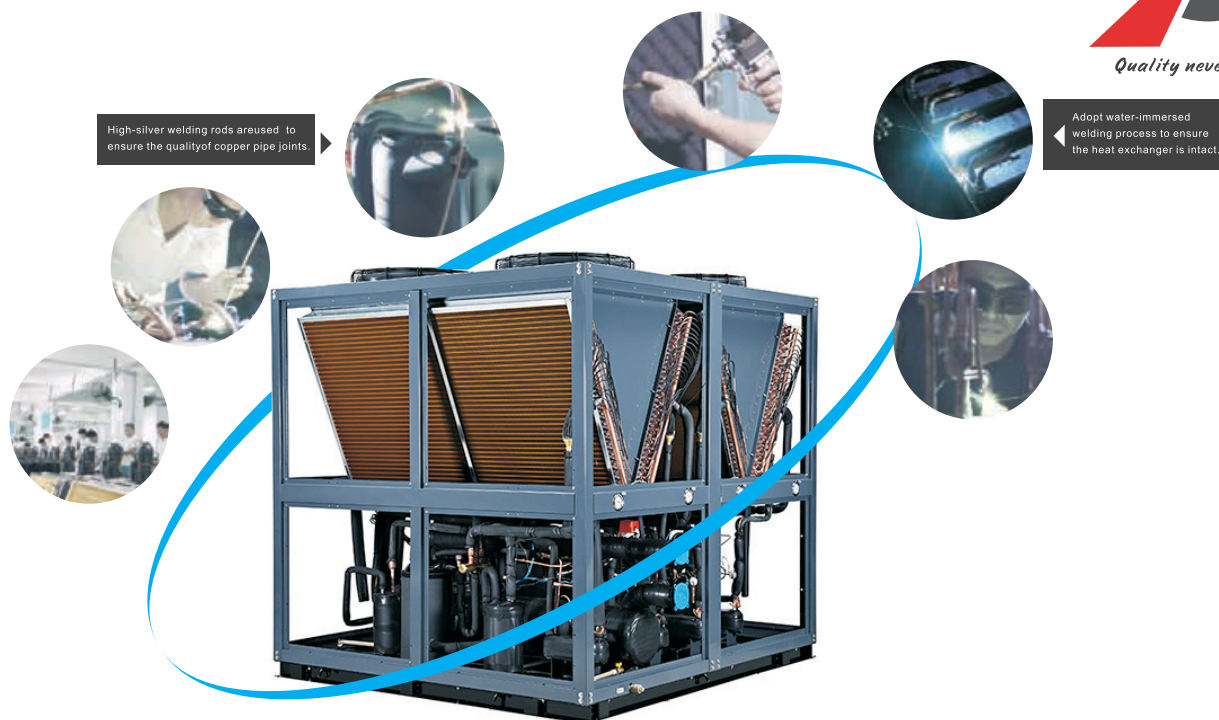
HUMANIZED CONTROL PANEL DESIGN

Military level PCB components, Intelligent Controlling Program reinforced for reliable operation of the heat pump unit. Special colored wiring design on the PCB provides great convenience in installation and further maintenance.



WIDE VOLTAGE TRANSFORMER

By using 220V-240VAC,50/60Hz wide voltage transformer , in case of any voltage fluctuation, it ensure unit work smoothly. Current transformer protects current and ensure unit more accurate.



DOMESTIC HOT WATER HEAT PUMP SERIES



Univon Domestic Water Cycle Heat Pump With Built-in Water Pump



Univon Domestic Series Heat Pump adopts High Efficient Tank Heat Exchanger and Built-in Water Pump inside the Heat Pump, which ensures High Efficient Performance Of the system. It can supply domestic Hot Water for Bathing, Shower, Washing etc .

DESCRIPTION

PARAMETER LIST

P a r a m e t e r s	Rated heating capacity (kW)	3.8	5.3	7.6	10.5
	Rated input power (kW)	0.98	1.34	1.87	2.64
	Max input power (kW)	1.27	1.74	2.43	3.10
	Rated current (A)	4.5	6.2	8.6	12.2
	Max current (A)	5.9	8.1	11.2	14.1
	COP (Coefficient of Performance)	3.88	3.96	4.06	3.80
	Power supply	220V/50Hz/1PH			
	Refrigerant	R410A			
	Rated heated water output (L/H)	106	150	215	252
	Rated outlet water temperature (°C)	60			
	Max outlet water temperature (°C)	60			
	Working ambient temperature	-7~45°C			
	IP grade (Level of protection)	IPX4			
	Anti-electric shock rate	I			
S t a n d a r d i z e d	Noise (dB(A))	≤50			
	Water circulation (L/H)	602	843	1169	1634
	Diameter of pipe (mm)	DN20			
	Metel plate	Galvanized steel/Spray/white			
	Compressor	Panasonic Rotary			
	Water pump inside	Wilo			
	Condenser	Efficient tank heat exchanger			
	Evaporator	L-1/900*500/φ7	L-2/900*500/φ7	L-2/900*500/φ7	U-2/1200*550/φ7
	Fan	φ300*1	φ400*1		φ420*1
	Motor (with capacitance)	18W*1(2uf)	25W*1(2uf)		100W*1(5uf)
	Four-way valve	SHF-4H-23U-P	SHF-7H-34u		SHF-9H-35U
	Expansion valve	Capillary tube			
	Low pressure switch	0.15/0.32MPa			
	High pressure switch	3.8/4.4MPa			
Controller	Single System (Chico)				
Power line connect with unit	3*1.5mm2			3*2.5mm2	
Body size (W*D*H) (mm)	820*320*520	1000*365*560		1010*350*630	
Packing size (W*D*H) (mm)	845*345*655	1100*375*710		1055*370*730mm	
Net weight/Gross weight (kg)	53/58	55/60	59/64	59/64	
Package	Polywood packing				

Working condition: Dry bulb temperature 28°C, Wet bulb temperature 20°C, Inlet water temperature 20°C, Outlet water temperature 60°C.

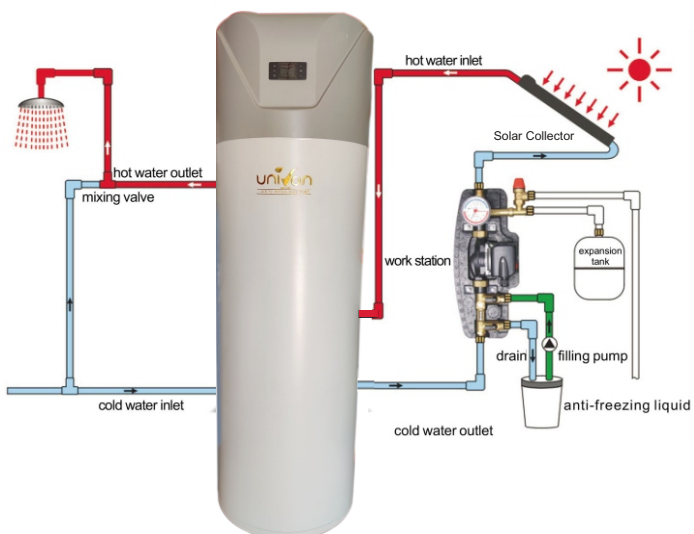


FEATURES & BENEFITS

- R410AGas, environmentally friendly.
- Max output temperature 60 Deg.C.
- Built-In Water Pump.
- CE,IEC Approved.
- Four-Way Valve for Automatic Defrosting.
- Four-Way Valve for Automatic Defrosting.
- Close Refrigerant Circuit, easy to install.



Univon All in One Air Heat Pump (Hybrid Solar + Heat Pump)



Univon All-in-One water heat pump is one of the most economical systems to heat the water for family usage-offering hot water to the bathroom and kitchen by using free renewable energy from the air. its efficiency shall be up to 3-4 times more than conventional gas boiler or electrical heater.

DESCRIPTION

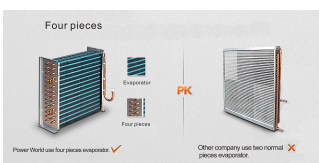
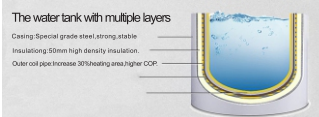
Features & Benefits

- Easy to install: There are no refrigeration connections to be made – just water fittings and an electrical plug. Any plumber can do it.
- Energy-efficient heating performance: It's much cheaper to operate than electric element or gas bottle water heaters.
- Space efficiency: Unlike split-system units, all components of a complete refrigerant systems are contained in one location, making package units ideal for situations in which indoor space is at a premium.
- Security and stability: Digital controller will continually monitor performance.
- High efficient heat pump rotary compressor: Famous brand such as Hitachi Rotary, Toshiba Rotary...



Multi-dimensional safe design

Outer coil design — safer and strong
Outer coil design avoid copper pipe corrosion.
Water tank lifetime lengthen more than two years!



Univon All in One Air Heat Pump (Hybrid Solar + Heat Pump)

PARAMETER LIST

Model		Univon Air 200Ls	Univon Air 250Ls	Univon Air 300Ls
Rated heating Capacity	kW	2.5	2.5	2.5
Electric heater*	kW	2	2	2
Rated power input**	W	600 (+2000*)	600 (+2000*)	600 (+2000*)
Rated current**	A	2.9 (+ 8.6*)	2.9 (+ 8.6*)	2.16 (+6.5*)
COP**		4.16	4.16	4.16
Energy class*** (ERP)		A	A	A
Power supply	V/Ph/Hz	220-240/1/50		
Max outlet water temperature (without using E-heater)	°C	60		
Compressor		GMCC(Toshiba) PJ125		
Refrigerant		R134a		
Inner tank material		Steel Enamel tank.		
Heat pump heat exchanger coil		Copper External coil		
Solar thermal connection		Internal coil MS		
Expansion valve		Electronic expansion valve included		
Rated water yield	L/H	61	61	61
Max. water operating pressure	Mpa	1.0	1.0	1.0
Rated water pressure	Mpa	0.6	0.6	0.6
Set point relief valve	Mpa	0.7	0.7	0.7
Sound pressure level	dB (A)	48	48	48
Net weight	kg	88	95	102
Net size (WxHxD)	mm	Φ620×1750	Φ620×1850	Φ620×1950
Package size (WxHxD)	mm	700×700×1930	700×700×2030	700×700×2130

**Testing conditions: Ambient temperature 28 °C, water temperature from 20 °C to 60 °C.

***Testing conditions: Based on standard ERP, XL cycle: Ambient temperature 30 °C/25 °C, water temperature from 20 °C to 60 °C)



Univon Commercial Air Source Heat Pump (Cycle Heating)



Univon Commercial Air Source Heat Pumps adopt environmental-friendly Refrigerant R407C. They are widely suitable for providing Hot Water at Residential /Commercial use. It can provide stable 55°C Hot Water, Max Hot Water temperature up to 60°C and it can operate at -7°C

DESCRIPTION



Univon Commercial Air Source Heat Pump (Cycle Heating)

Features & Benefits

- Heating capacity 11.5kW~110kW.
- American Copeland scroll compressor guarantees stable and high efficient working.
- High efficient tube in shell heat exchanger or tube in tube heat exchanger.
- Intelligent EEV, precise control and excellent efficiency at different ambient temperature.
- Intelligent control and Automatic Data Backup (with self-diagnosis function, auto-defrosting function, complete protection function) to ensure reliable operation.
- LCD display with touch keys for easy access, LCD display is very convenient for checking and setting.

Univon Commercial Air Source Heat Pump (Cycle Heating)

PARAMETER LIST

Product Model	UniQXC 11.5	UniQXC 19	UniQXC 38.5 U	UniQXC 53 V	UniQXC 78 V	UniQXC 95 V	UniQXC 110 V
Rated heating capacity (kW)	11.5	19	38.5	53	78	95	110
Rated input power (kW)	2.95	4.8	9.6	13.2	19.2	23.8	27.8
Max input power (kW)	3.98	6.5	13.0	17.8	25.9	32.1	37.5
Rated current (A)	5.9	9	17.6	25.9	36.1	41.4	52.3
Max current (A)	8.0	12.2	23.8	35.0	48.7	55.9	70.6
COP (Coefficient of Performance)	3.90	3.96	4.01	4.06	4.06	3.99	3.96
Power supply	380V/50Hz/3PH						
Refrigerant	R 407C						
Rated heated water output (L/H)	283	467	946	1297	1916	2334	2702
Rated outlet water temperature (°C)	55°C						
Max outlet water temperature (°C)	60°C						
Working ambient temperature	-7°C to 45°C						
IP grade (Level of protection)	IPX4						
Anti-electric shock rate	I						
Noise (dB(A))	≤55	≤58	≤66	≤68	≤68	≤72	≤75
Water pressure drop (kPa)	25	30	35	40	46	48	52
Water circulation (L/H)	2260	3734	7566	8942	15329	18670	21618
Diameter of pipe (mm)	DN25	DN25	DN32	DN32	DN50	DN65	DN65
Metel plate	Galvanized steel/Powder Coated/Gray						
Compressor	Copeland						
Condenser	Efficient tank heat exchanger / Tube in tube heat exchanger						
Evaporator	U-1/1660*650/φ9.52	U-1/1860*900/φ9.52	U-2/1100*900/φ9.52	V-3/650*1260*3/φ9.52	V-3/900*1500*2/φ9.52	V-3/900*1700*2/φ9.52	V-3/900*1900*2/φ9.52
Fan Motor (with capacitance)	90W*1(5μf)	250W*1(15μf)	250W*2(15μf)	YSWF102L50P6-625N-550*2	YSWF102L70P6-753N-630*2	YSWF127L50P6-840N-710*2	YSWF127L50P6-840N-710*3
Four-way valve	DSF-11	DSF-20	DSF-20	DSF-20	DHF-35	DHF-35	DHF-35
Expansion valve	Danfoss /Emerson						
AC contactor	220V-12A	220V-18A	(220V-18A)*2	(220V-32A)*2	(220V-38A)*2	(220V-38A)*2	(220V-38A)*3
Low pressure switch	0.05/0.15MPa						
High pressure switch	3.0/3.6MPa						
Controller	Single System (Motorola Chip)		Dual system (Motorola Chip)		Four system (Motorola Chip)		
Power line connect with unit	3*2.5mm ² +2*1.5mm ²	3*4mm ² +2*2.5mm ²	3*6mm ² +2*2.5mm ²	3*10mm ² +2*4mm ²	3*10mm ² +2*4mm ²	3*16mm ² +2*6mm ²	3*16mm ² +2*6mm ²
Body size (W*D*H) (mm)	710*710*870	810*800*1030	1500*750*1030	1580*800*1600	1850*1000*1950	2000*1100*2080	2300*1100*2300
Packing size (W*D*H) (mm)	810*810*1070	910*900*1230	1600*850*1230	1680*900*1800	1950*1100*2050	2100*1200*2280	2400*1200*2500
Net weight/Gross weight (kg)	100/106	145/155	280/300	372/412	482/532	582/642	612/675
Package	Polywood packing						

Working condition: Dry bulb temperature 28°C, Wet bulb temperature 20°C, Inlet water temperature 20°C, Outlet water temperature 60°C.



Univon 80°C High Temperature Air Source Heat Pump For Hot Water



Univon High Temperature series adopt Environmental-friendly Refrigerant R134A and EVI (Enhanced Vapour Injection) technology. They can produce stable 75 °C Hot Water, Max hot water temp up to 80°C , widely used for Industrial Sector.

DESCRIPTION

Univon 80°C High Temperature Air Source Heat Pump For Hot Water

PARAMETER LIST

Product model		UniQPF030-KFGRS-S	UniQPF030-KFGRS	UniQPF050-KFGRS	UniQPF100-KFGRS	UniQPF200-KFGRS	UniQPF300-KFGRS
Parameter	Rated heating capacity (kW)	8.2	9.2	15.2	30.4	60.1	90.8
	Rated input power (kW)	2.9	3.3	5.4	10.8	21.5	32.3
	Max input power (kW)	3.92	4.46	7.3	14.6	29.0	43.6
	Rated current (A)	13.2	6.6	10.8	21.6	43	64.6
	Max current (A)	17.8	8.9	14.6	29.2	58.1	87.2
	COP (Coefficient of Performance)	2.83	2.79	2.81	2.81	2.80	2.81
	Power supply	220V/50Hz/1PH	380V/50Hz/3PH				
	Refrigerant	R134A					
	Rated heated water output (L/H)	130	145	240	480	900	1435
	Rated outlet hot water temperature ()	75					
	Max outlet hot water temperature ()	80	80	80	80	85	85
	Working ambient temperature	-5~43					
	IP grade (Level of protection)	IPX4					
	Anti-electric shock rate	I					
	Noise (dB(A))	≤55	≤55	≤58	≤66	≤68	≤75
Water pressure drop (kPa)	25	25	30	35	46	52	
Water circulation (m³/H)	3	3	5	10	20	30	
Diameter of pipe (mm)	DN25	DN25	DN25	DN32	DN50	DN65	
Standard Configuration	Metel plate	Galvanized steel/Spray/Gray					
	Compressor	Copeland					
	Condenser	Efficient tank			tube in tube		
	Economy unit (EVI heating exchanger)	Plate Type MTB020-17	Plate Type MTB020-17	Plate Type MTB020-17	Plate Type MTB020-17*2	Plate Type MTB020-17*4	Plate Type MTB020-17*4
	Evaporator	U-2/1550*600/φ9.52	U-2/1550*600/φ9.52	L-2/990*1200/φ9.52	V-2/650*1260*2/φ9.52	V-3/900*1500*2/φ9.52	V-3/900*1900*2/φ9.52
	Fan	φ420*2	φ420*2	φ490*2	YSWF102L50P6-625N-550*2	YSWF127L50P6-840N-710*2	YSWF127L50P6-840N-710*3
	Motor (with capacitance)	50W*2(4μf*2)	50W*2(4μf*2)	90W*2(5μf)			
	Four-way valve	DSF-11	DSF-11	DSF-20	DSF-20*2	DSF-20*4	DHF-35 *3
	Expansion valve	Danfoss /Emerson					
	AC contactor	(220V-25A)	(220V-12A)	(220V-18A)	(220V-18A)*2	(220V-18A)*4	(220V-38A)*3
	High pressure switch	2.4/3.0MPa					
	Controller	Single System (Motorola Chip)			Dual system (Motorola Chip)		
	Power line connect with unit	3*2.5mm²	3*2.5mm²+2*1.5mm²	3*4mm²+2*2.5mm²	3*6mm²+2*2.5mm²	3*10mm²+2*4mm²	3*16mm²+2*6mm²
	Body size (W*D*H) (mm)	1110*490*1260	1110*490*1260	1110*490*1260	1580*800*1600	1850*1000*1950	2300*1100*2300
	Packing size (W*D*H) (mm)	1180*540*1390	1180*540*1390	1180*540*1390	1680*900*1800	1950*1100*2050	2400*1200*2500
Net weight/Gross weight (kg)	105/111	105/111	150/160	310/330	482/532	612/675	
Package	Polywood packing						

Working condition: Dry bulb temperature 28°C, Wet bulb temperature 20°C, Inlet water temperature 20 °C , Outlet water temperature 80 °C .

Features & Benefits

- 1.Stainless steel/ galvanized powder coated steel resist corrosion.
- 2.American Copeland EVI scroll compressor supplement more capacity through economizer for high outlet water temp.
- 3.High efficient tube in shell heat exchanger and Tube in tube heat exchanger.
- 4.Intelligent EEV, precise control and excellent efficiency at different ambient temperature.
- 5.Intelligent control and Automatic Data Backup (with self-diagnosis function, auto-defrosting function, complete protection function) to ensure reliable operation.
- 6.LCD display with touch keys for easy access, LCD display is very convenient for checking and setting.



Application: Electroplating, printing and dyeing, chemical industry, metal pretreatment, slaughterhouse etc which need high temp. hot water.



Univon Heat Pump Dryers adopt Heat Pump Technology, absorb heat from environment and compress it to High temp. Gas and transfer it to Drying Chamber, and then dry the items.

DESCRIPTION

Univon High Temperature Air Source Heat Pump For Drying

PARAMETER LIST

Model No.	Unit	UBC050-QFXHG(GW)	UBC060-QFXHG(GW)	UBC100-QFXHG(GW)	UBC120-QFXHG(GW)	UBC150-QFXHG(GW)
Power supply	V/Hz/PH	380V/50Hz/3PH				
Rated heating capacity	kW	8.4	21	28.9	38.5	42
Rated power input	kW	4.3	6.3	8.5	10.6	12.9
Rated current	A	8.1	12.5	16.2	20.1	24.3
Max power input	kW	6.4	7.35	12.8	15.9	19.2
Max current	A	12.1	14.9	24.3	30.1	36.5
Dewatering amount	Kg/H	20	24	40	48	60
Best outlet air temp.	°C	75	75	75	75	75
Max outlet air temp.	°C	85	85	85	85	85
Working ambient temp.	°C	5-43	5-43	5-43	5-43	5-43
Noise	DB(A)	≤56	≤56	≤60	≤60	≤60
Air volumn	m ³ /H	1800*2	1800*2	1800*3	1800*3	1800*3
Product size	mm	800*810*1100	800*810*1100	1500*750*1070	1530*800*1600	1530*800*1600
Weight	Kg	340	350	480	500	520
Remarks	White casing: Top outlet down inlet; Gray casing: Down outlet top inlet. Two designs are optional.					
	Rated dehumidification working condition: Dry bulb temp. 50°C, relative humidity 80%.					



Features & Benefits

- 01 Drying faster and more power-saving.
- 02 Stainless steel / galvanized powder coated steel resist corrosion.
- 03 Intelligent digital sensor temperature control.
- 04 Temperature, one-step set, no need for person on duty.
- 05 No pollution for drying items and environment.

Application: Agricultural byproducts, Chinese traditional medicinal materials, dried fruits, seafood, tobacco etc.

Live Installation Photos



Live Installation Photos



Manufacturers & Brand Owners of :



UNIQUE-Q TECH INDIA PVT LTD

Site No: 108 & 109, "Yajaman Thimmaiah Enclave", Madanayakanahalli Grama S.Y. No: 27,
Dasanapura Hobli, Bengaluru - 562 162, Karnataka, India